

2023.06.23. (Fri)
15:15~16:45 15 min (ENG)

Cross Specialty Session 2. EP - Neurology

KHRS 2023
June 23(Fri.) - 24(Sat.), 2023
Grand Walkerhill Seoul, Korea
The 15th Annual Scientific Session of the Korean Heart Rhythm Society

Understanding Atrial Cardiopathy

Seung Yong Shin, M.D., PhD.

Professor of Medicine, Chung-Ang University, Seoul, KOREA

Director of EP Division, Cardiovascular & Arrhythmia Center, Chung-Ang University Hospital, Seoul, KOREA

Adj. Prof. of Grad. Sch. of Convergence and Innovation in Technology and Engineering (CITE), POSTECH, Pohang, KOREA

Center for Precision Medicine Platform Based-on Smart Hemo-Dynamic Index (SHDI), Seoul, KOREA

CAU
중앙대학교

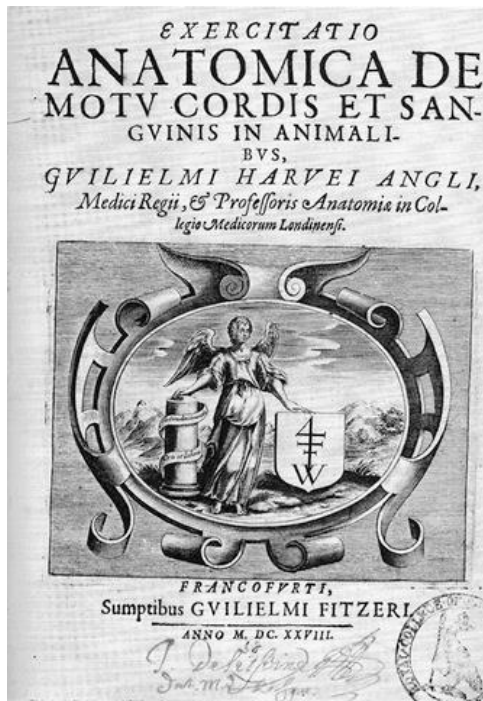
한국의 중앙에서 세계의 중앙으로
Toward the University of the world from Chung- Ang of Korea

William Harvey

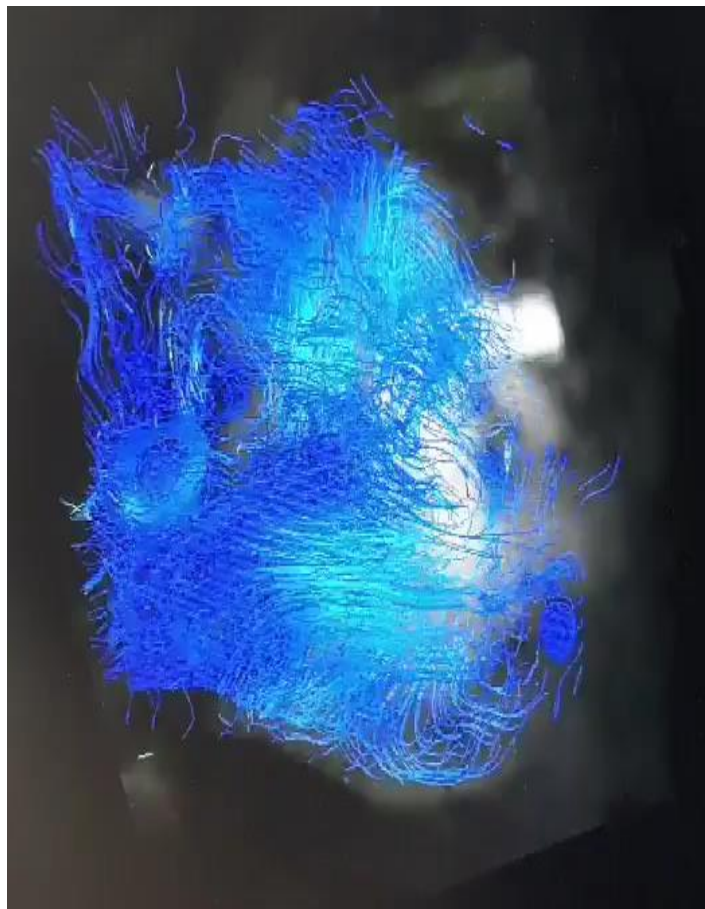
1578 ~ 1657, UK

Invisible?

Exist!



Normal Sinus Rhythm vs. Atrial Fibrillation

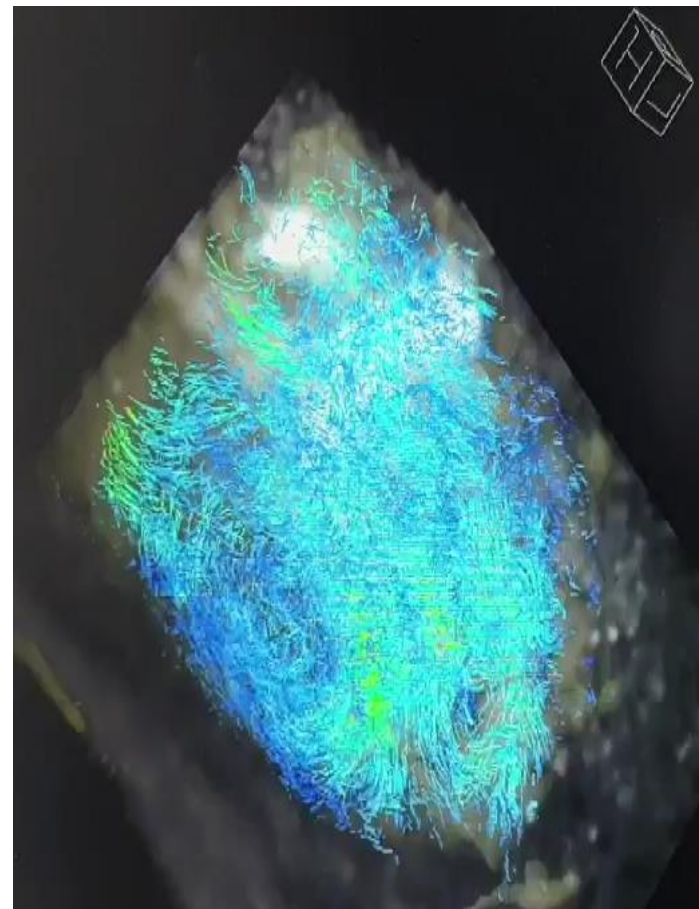


Regular
Synchronized

Mechanical
Activity
assessed by
4D MRI



Electrical
Activity
assessed by
EKG



Irregular
Dyssynchronized

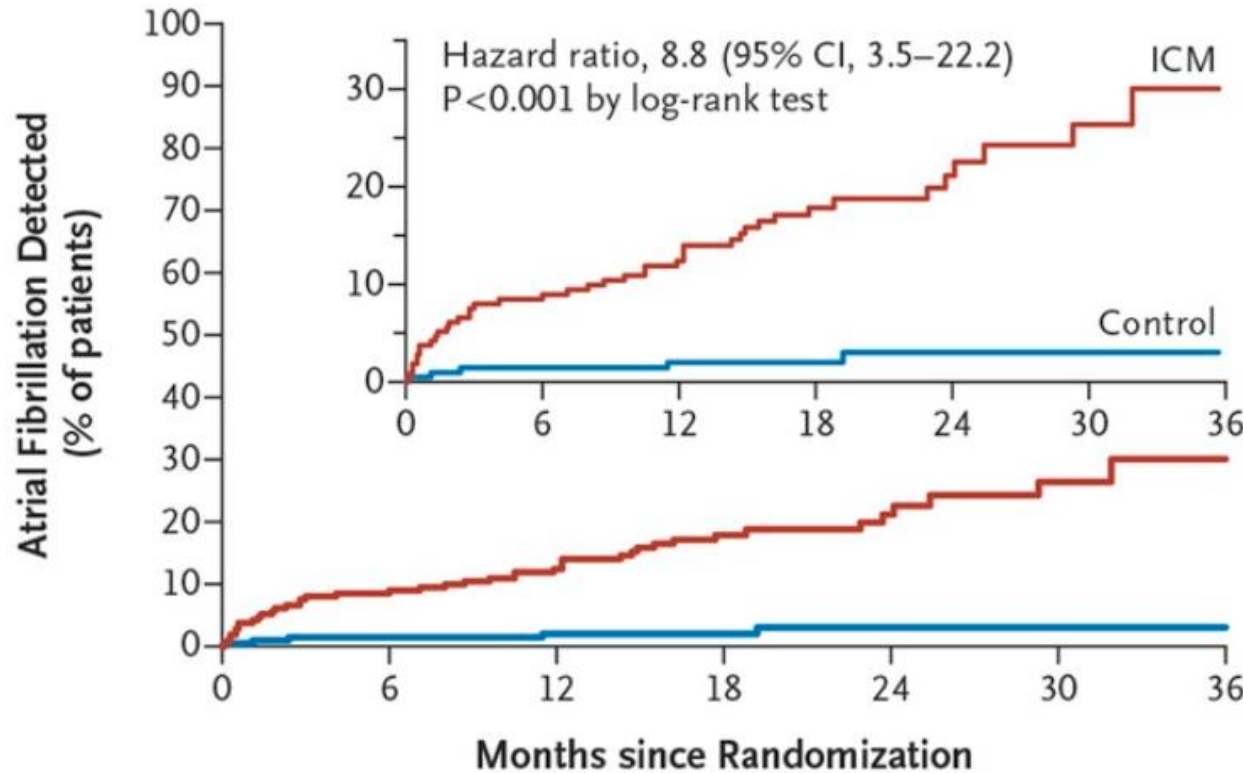
Blood Stasis
→ Thrombi
→ Stroke



In CRYSRAL-AF Trial...

- N = 447 cryptogenic stroke patients
- 1:1 randomization to ICM vs. standard care

C Detection of Atrial Fibrillation by 36 Months



ILR markedly increased AF detection by **8.8 times**

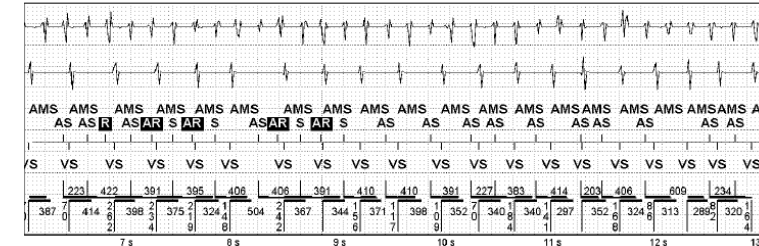
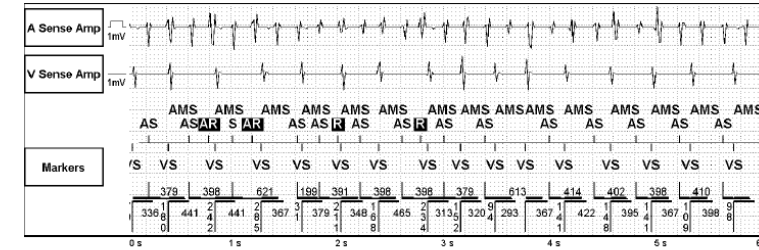
Remaining 2/3 of ILR group were unrevealing despite of **3 years of continuous ECG monitoring**

No. at Risk

| | | | | | | | |
|---------|-----|-----|-----|-----|----|----|---|
| Control | 220 | 194 | 167 | 114 | 72 | 36 | 7 |
| ICM | 221 | 191 | 173 | 102 | 57 | 29 | 8 |

Within Pacemaker Clinic,

- F/78, Sick sinus syndrome
- Pacemaker implantation in 2020
- **3 Recurrent stroke events** in 2013, 2016, 2018
- Favors thromboembolic stroke
- Failed to diagnose AF before PM implantation
- During 3 years follow up, AF was detected in PM



True AF events in EGM

Episodes

| Date / Time | Type | Peak A / V Rate (min-1) | Duration (D:H:M:S) | Alerts |
|----------------------|-----------------------|----------------------------|-----------------------|--------|
| Mar 5, 2023 11:49 am | AMS Entry | 187 / 63 | 0:00:00:04 | |
| Mar 5, 2023 11:49 am | AMS Entry | 226 / 124 | 0:00:00:08 | |
| Mar 4, 2023 1:11 pm | High Ventricular Rate | | 0:00:00:37 | ⚠ |
| Mar 4, 2023 1:01 pm | AMS Entry | 640 / 194 | 0:00:45:42 | |
| Mar 4, 2023 11:49 am | AMS Entry | 290 / 135 | 0:00:00:12 | |

Atrial Cardiopathy

- Recent advances in pathogenesis of stroke even in patients with atrial cardiopathy, which is the objective of this narrative review on cryptogenic stroke. We reviewed identified studies, including the relationship between atrial cardiopathy and stroke before developing atrial cardiopathy. Although there are several criteria for atrial cardiopathy, **force in lead V1 (>5,000 μV) and atrial enlargement are the most important**. Because the optimal treatment for atrial cardiopathy remains uncertain, atrial cardiopathy appears to be a potential therapeutic target for direct oral anticoagulants are currently being covered in the ARCADIA trial.

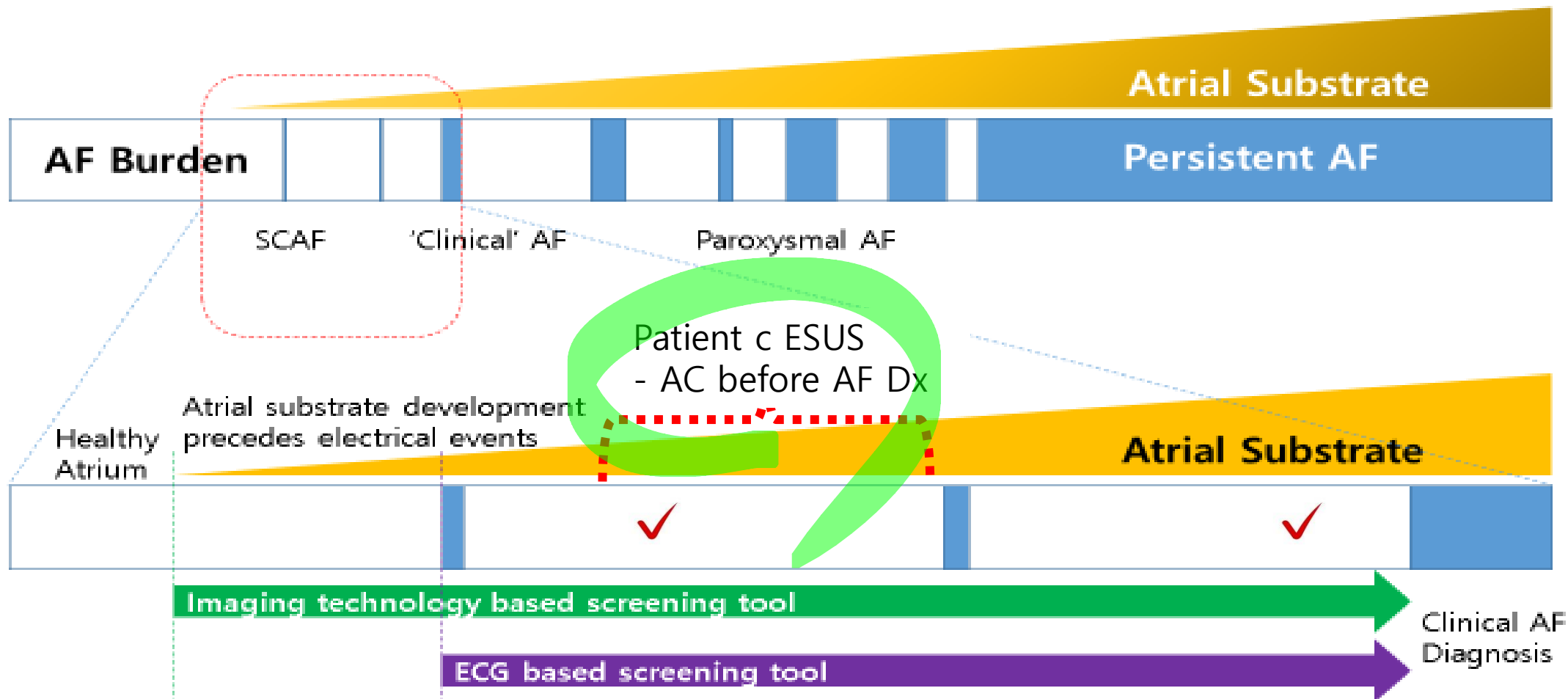
Definition of atrial cardiomyopathy

The working group proposes the following working definition of atrial cardiomyopathy: ‘Any complex of structural, architectural, contractile or electrophysiological changes affecting the atria with the potential to produce clinically-relevant manifestations’ (Table 1).

Many diseases (like hypertension, heart failure, diabetes, and myocarditis) or conditions (like ageing and endocrine abnormalities) are known to induce or contribute to an atrial cardiomyopathy.

Europace 2016;18:1455-1490.

AF is Progressive



Subclinical AF (SCAF) & Stroke

> Eur J Echocardiogr. 2011 Feb;12(2):140-7. doi: 10.1093/ejechocard/jeq164. Epub 2010 Nov 26.

Impaired transport function of the left atrium and left atrial appendage in cryptogenic stroke patients with atrial septal aneurysm and without patent foramen ovale

Jin Oh Na¹, Seung Yong Shin, Hong Euy Lim, Cheol Ung Choi, Seong Hwan Kim, Jin Won Kim, Eung Ju Kim, Eun Mi Lee, Seung-Woon Rha, Chang Gyu Park, Hong Seog Seo, Dong Joo Oh, Young-Hoon Kim

Impaired LA function may suggest SCAF in cryptogenic stroke patients

Abstract

Aims: Although atrial septal aneurysm (ASA) is frequently combined with patent foramen ovale and associated with cryptogenic stroke (CS), a pathophysiologic correlation between CS and ASA alone has not been fully elucidated. The aims of this study were to assess transport functions of the left atrium (LA) and left atrial appendage (LAA), and to evaluate their relationship in CS subjects with ASA alone.

Methods and results: This study consisted of 38 CS subjects with ASA alone and 38 matched controls. Transthoracic echocardiography including tissue Doppler imaging was performed in all subjects and transesophageal echocardiography was conducted in CS subjects to assess LAA emptying velocity (LAAev). We also measured soluble P- and E-selectin, interleukin-6 (IL-6), and high-sensitivity C-reactive protein (hs-CRP) as indices of prothrombotic and proinflammatory activity. Although there were no differences in left ventricular functions and baseline characteristics between the two groups, CS subjects had significantly larger LA volume and lower LA active pump function compared with controls. LAAev was significantly correlated with LA active function. CS subjects had significantly higher E-selectin (P = 0.046), IL-6 (P = 0.040), and hs-CRP (P = 0.001) compared with controls.

Conclusions: Compared with controls, LA active pump function was significantly depressed and closely correlated with LAAev in CS subjects with ASA alone. Moreover, plasma levels of E-selectin, IL-6, and hs-CRP were significantly higher in CS subjects with ASA alone. These findings suggest that impaired LA and LAA functions are a crucial pathophysiologic mechanism for ischaemic stroke in subjects with ASA alone.

F
u
n
c
t
i
o
n
a
l

R
a
n
k
i
n
g

LA function w/o PAF

Normal

LA function w PAF during SR

Abnormal



Added value by LA **Functional** assessment

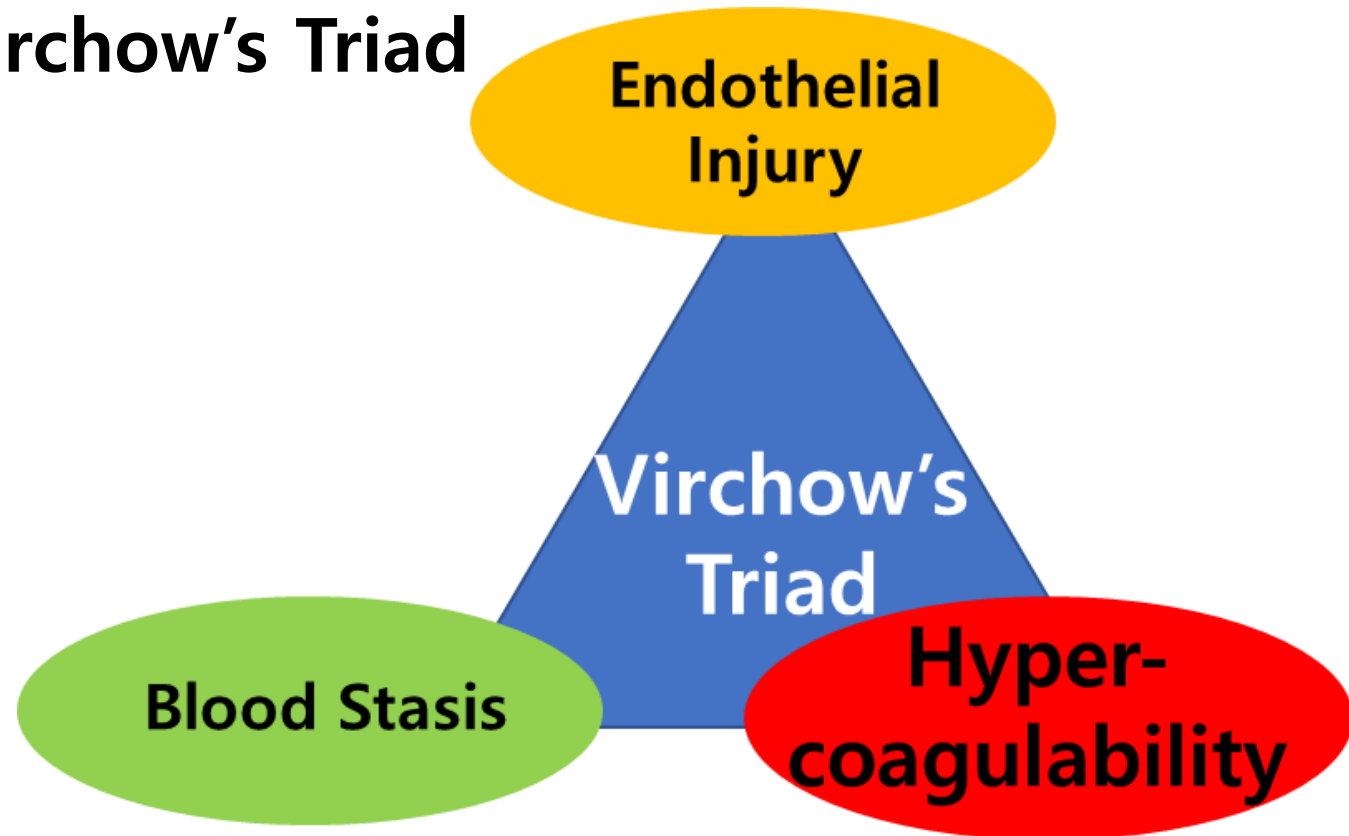
LA function w PAF during AF

LA function w Persistent AF

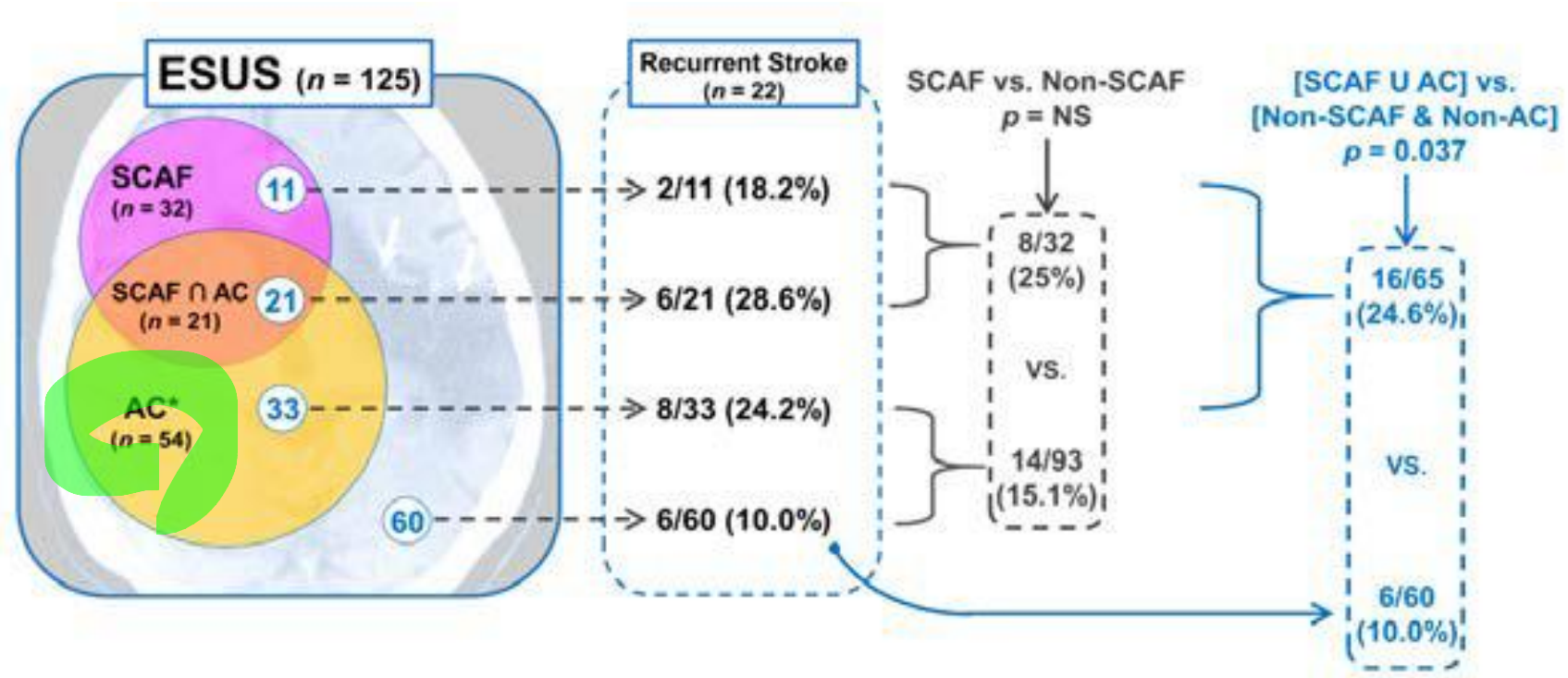
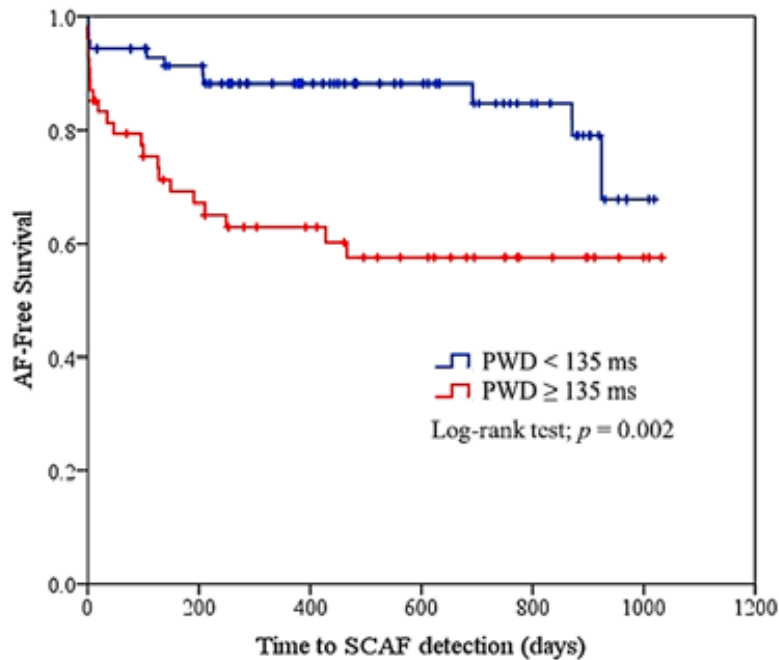


Rudolf Ludwig Karl Virchow

- 1821 ~ 1902, Germany
- **Virchow's Triad**



Risk Stratification by LA **Electrical** Remodeling (P wave duration by Signal averaged ECG)

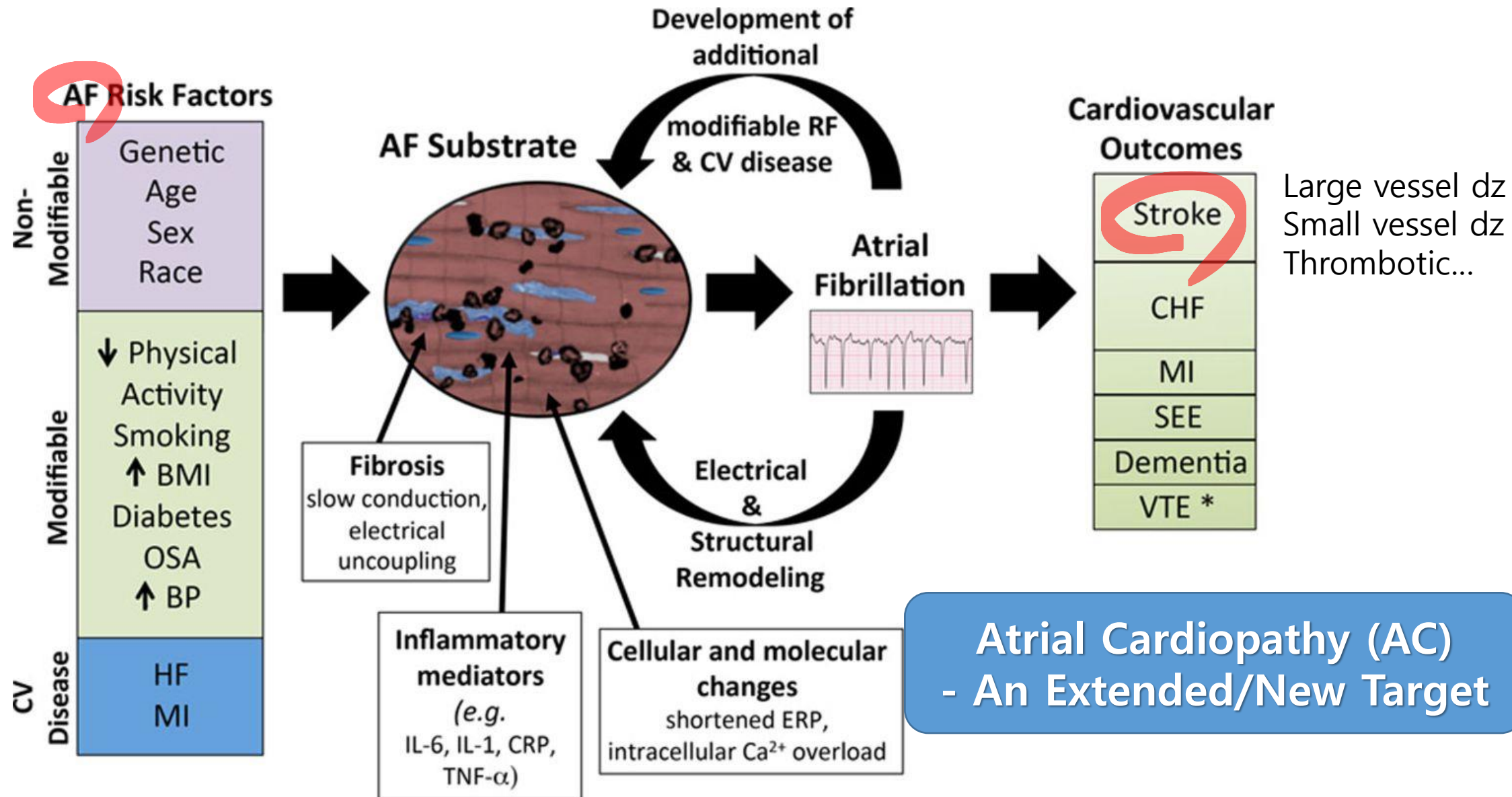


AF Detection modality
- 24 hr Holter & 12 lead ECG

Jung M,... Park KY, and Shin SY et al. J Clin Med 2020;9:1134.

Dynamic Target vs. **Static Target**

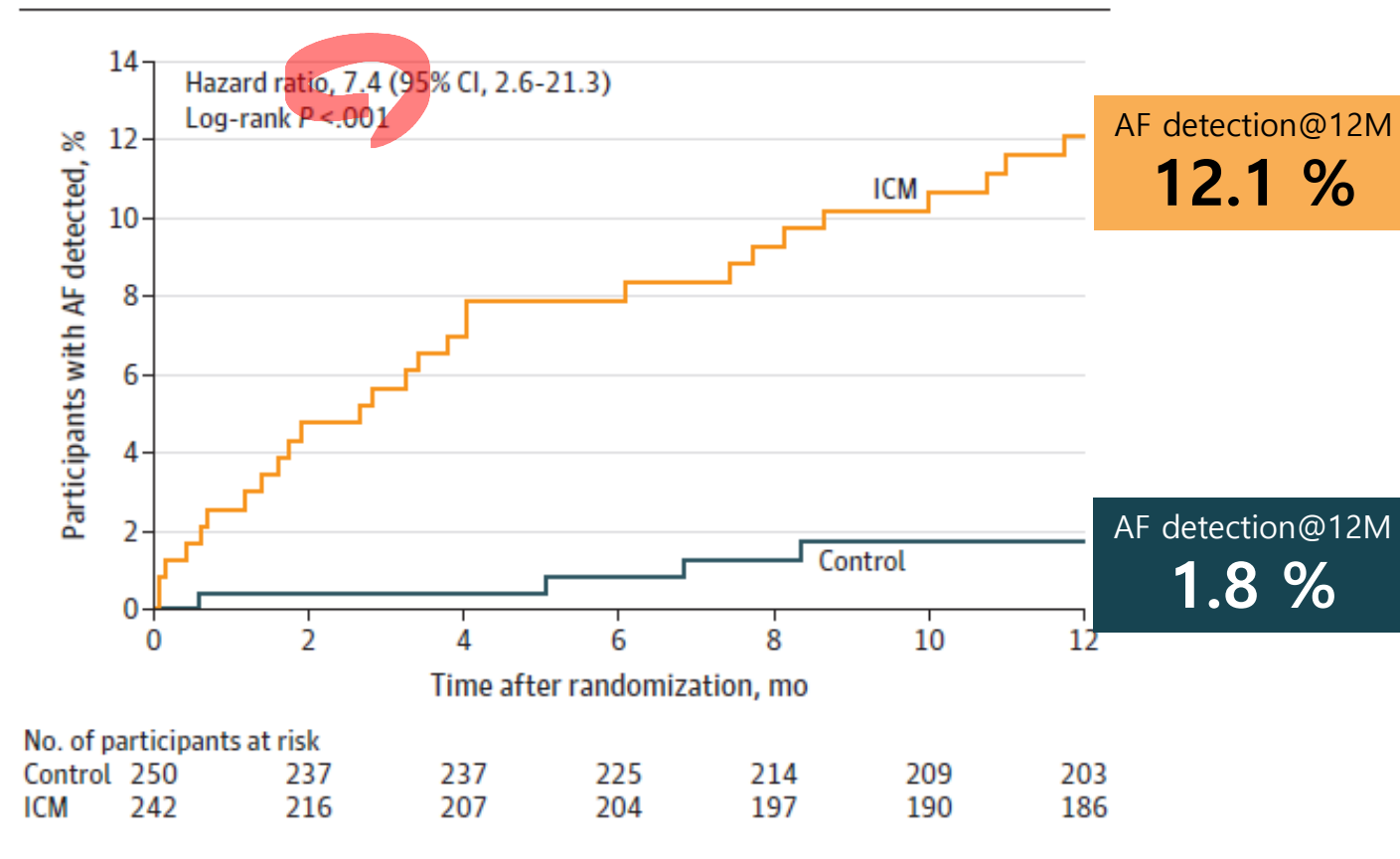
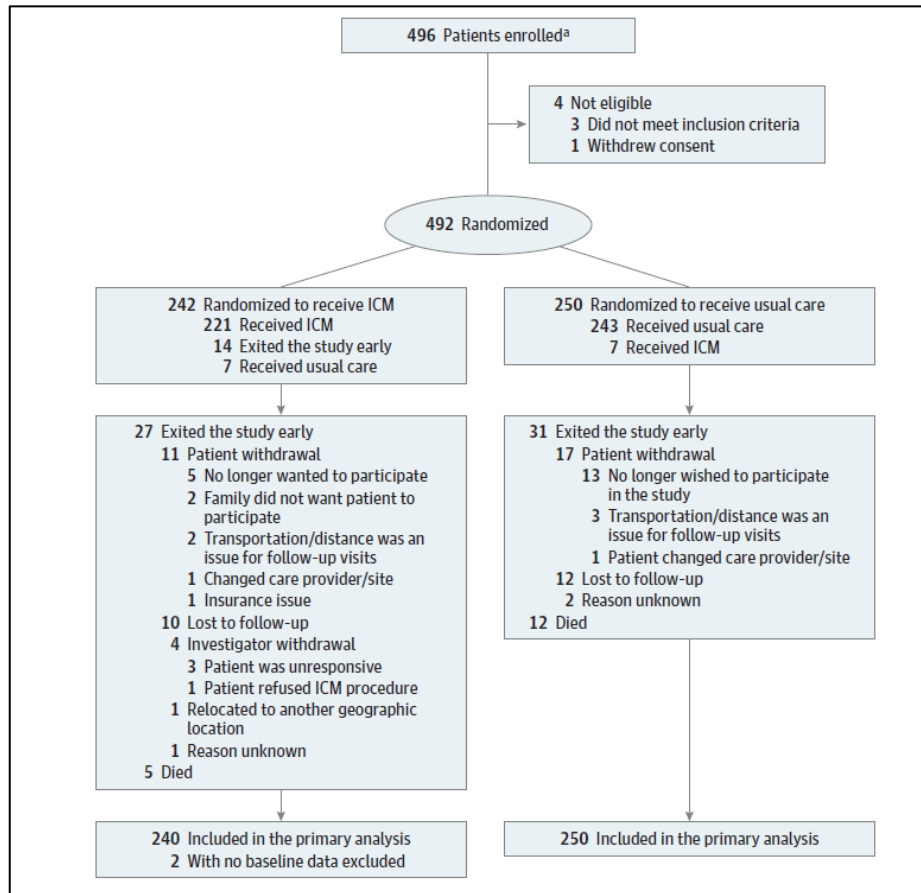
Shared Risk Factors & Pathogenesis



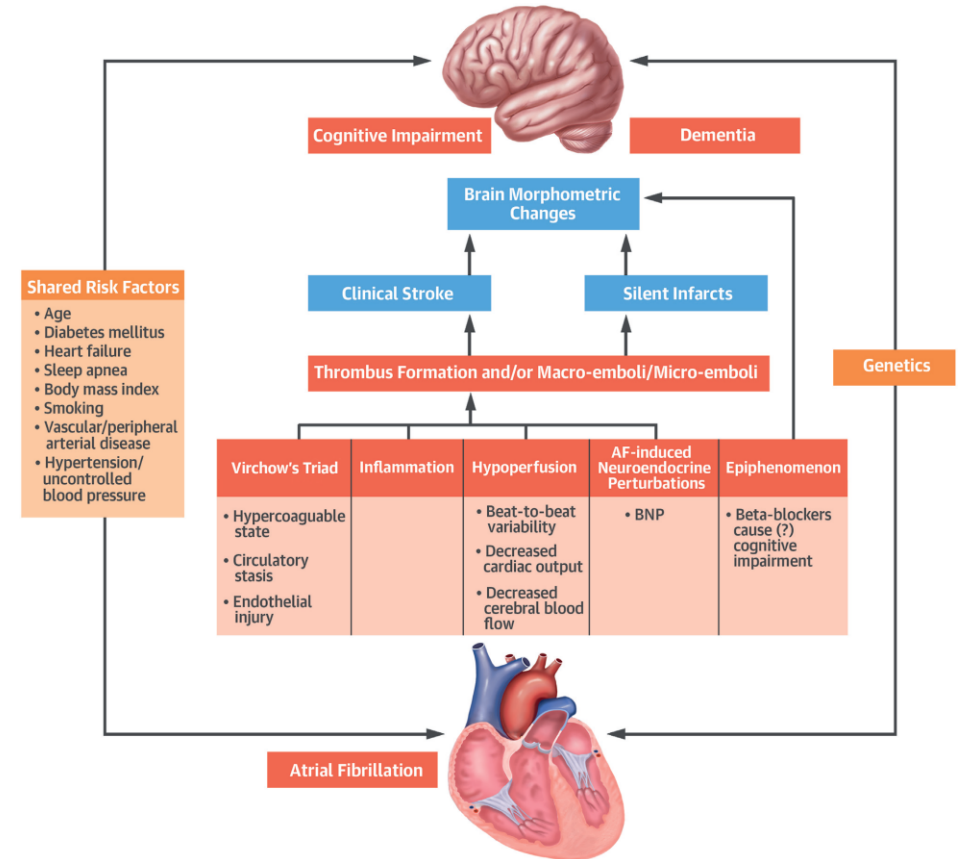
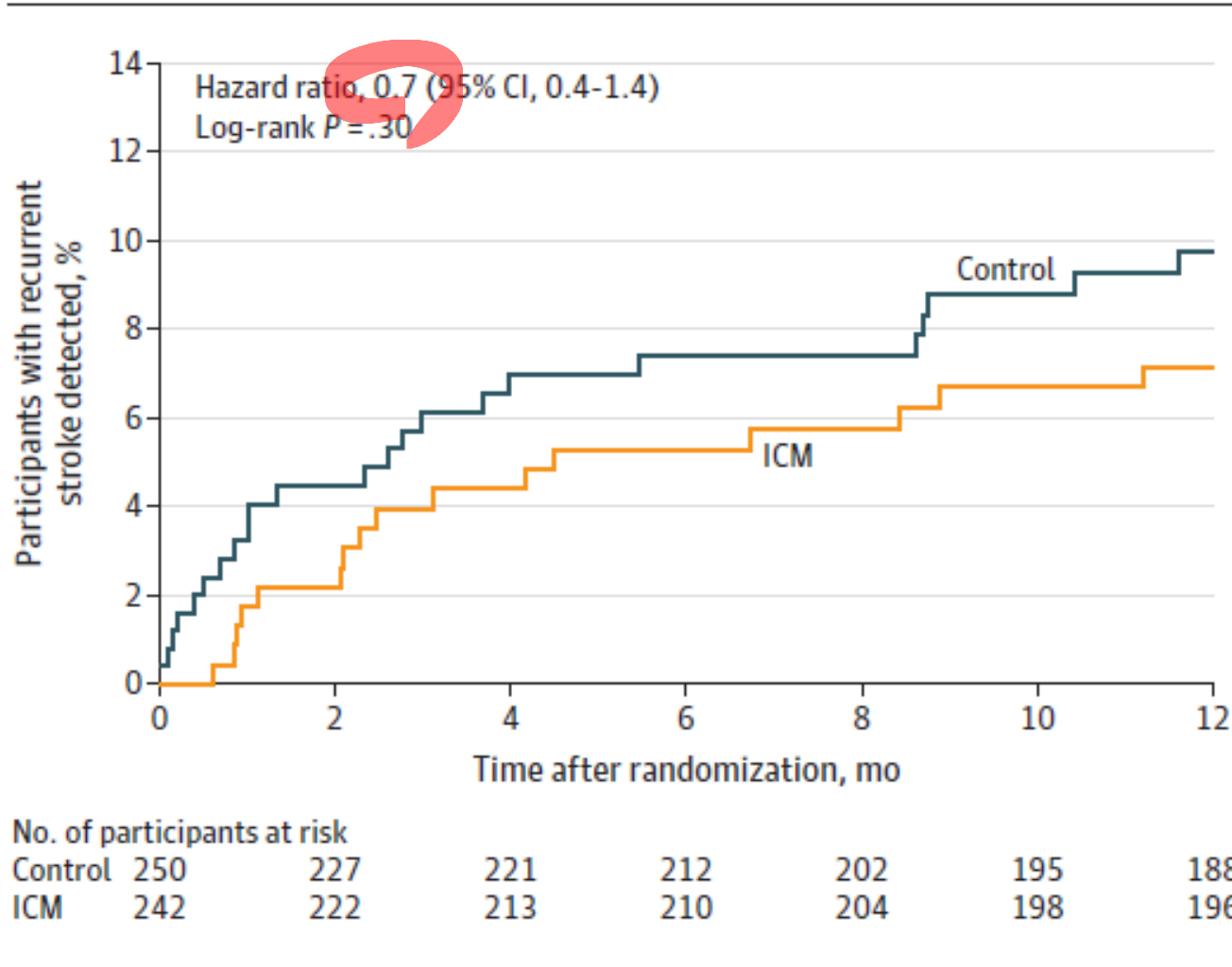
Recently...

STROKE-AF RCT

Tested value of **Prolonged & Continuous ECG monitoring** in Large/Small vessel diseases



Stroke Recurrence Reduced...



Take Home Messages

- It is time to focus our effort to **Atrial Cardiopathy (AC)**.
- AC is **not a new** disease entity.
- Features suggestive of AC can be found within our current practice.
- Organization and verification of features toward clinical benefit is necessary



**Thank you
for
Your Attention**

E-mail: theshin04@cau.ac.kr

theshin04@naver.com

+82 - 10-8863-1078